

CERTIFIED LAND CORNER RECORDATION

DESCRIPTION OF CORNER EVIDENCE FOUND, AND ORIGINAL RECORD (If known)

LOCATION No evidence of corner monument found. (Corner falls in graded county road) Corner position re-established from fences as shown on sketch below.

S.9 S.10
S.16S.15

T.15N., R.66W.
6th P.M. G.L.O. record - Granite boulder, 18" x 6" x 6"; John B. Thomas, Deputy Surveyor, September, 1870.

DESCRIPTION OF MONUMENT AND ACCESSORIES ESTABLISHED TO PERPETUATE THE ORIGINAL LOCATION OF THIS CORNER:

At the corner: Set a 5/8" dia. x 24" long rebar with 2" dia. aluminum cap.

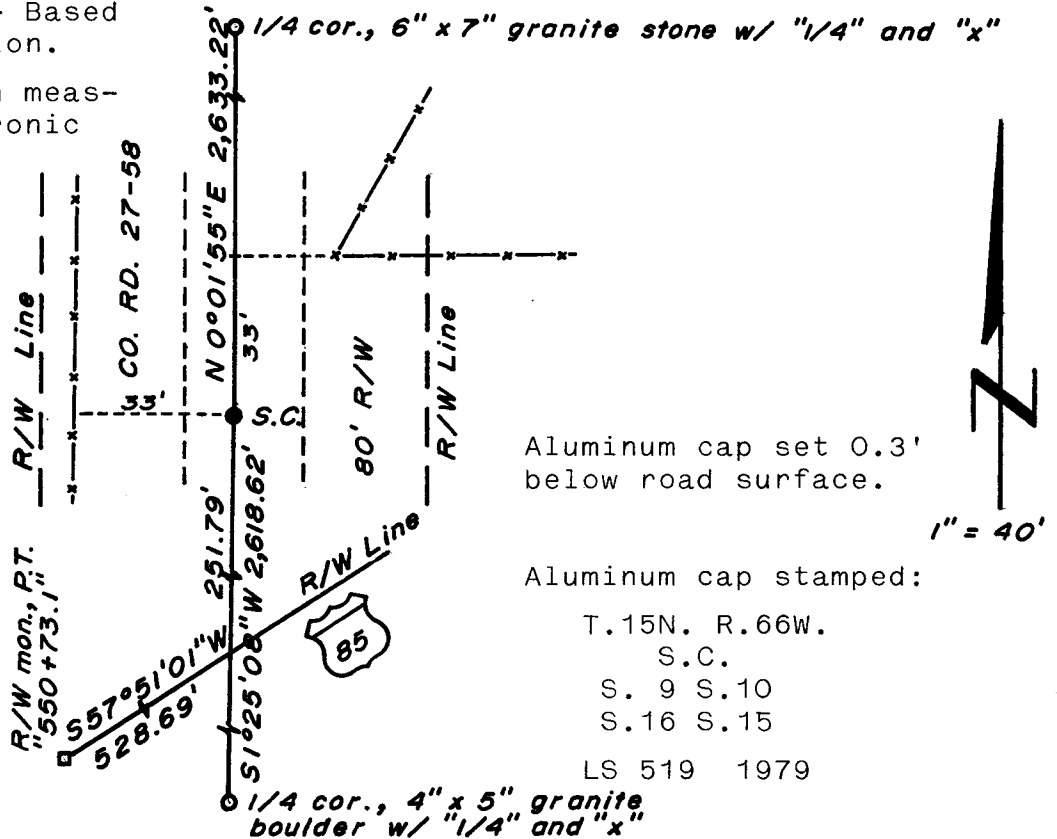
Accessories: None

SKETCH, WITH COURSE AND DISTANCE TO ADJACENT CORNER IF DETERMINED IN THIS SURVEY.

(May Sketch or Paste Reproduction on Reverse Side.)

Basis of Bearing - Based on solar observation.

Distances based on measurements by electronic means.



Aluminum cap set 0.3' below road surface.

1" = 40'

Aluminum cap stamped:

T.15N. R.66W.
S.C.
S. 9 S.10
S.16 S.15
LS 519 1979



I, R. L. Hudson certify that I have carefully performed ~~or reviewed~~ the work done on the diagrammed corner as reported on this recordation form and approve the same.

R. L. Hudson Wyoming L.S. No. 519
Signature of Surveyor Registration No.

STATE OF WYOMING,
Office of Clerk and Recorder,
County of Taramie

558990

This "corner record" was filed for record on the DEC 13 1979 day of 1979, 19____, was noted on the cross-index plat and is assigned page No. _____, in book No. _____.

James C. Withead
County Official

Cross Index No.	T. _____	R. _____	Mer.
	<u>J-13</u>	<u>15</u>	<u>66</u> Mer.
	_____	_____	Mer.
	_____	_____	Mer.
	_____	_____	Mer.
	_____	_____	Mer.
	_____	_____	Mer.